



JULY 2025

4-H Youth Show Newsletter

Washtenaw County



We Can't Wait for the 4-H Youth Show!

We are looking forward to seeing all of our Washtenaw County 4-H families, volunteers, and visitors at the Washtenaw County 4-H Youth Show. This newsletter is your go to spot for all the information about this upcoming event. **We also want to highlight the parking! We will be very full in trailer parking and need your assistance in making sure everyone is parking in the designated areas. If you park in the wrong area, we will ask you to move!**

If you have questions or need assistance during the Youth Show, please come visit our 4-H Staff at the 4-H Office in Building A. We will be open 9 am – 5 pm!

Newsletter Contents:

- Washtenaw Farm Council Grounds Maps and Parking
- Barn and Building Set Up & Clean Up
- Thanking Sponsors & Buyers
- Still Projects Judging & Information
- Animal Haul In Information
- Auction Information
- Food During 4-H Youth Show
- Volunteer Opportunities
- Recognition & Fun Events
- Camping Information from WFCG Staff
- 4-H Youth Show Schedule

CONTACT US

Amy Harris

4-H Program Coordinator

harr1976@msu.edu

Jenny Speyer

4-H Program Instructor

speyerje@msu.edu

705 N. Zeeb Rd.,
P.O. Box 8645
Ann Arbor, Michigan
48107

PHONE & EMAIL:

734-997-1678

msue.washtenaw@county.msu.edu

WEBSITE:

<https://www.canr.msu.edu/washtenaw/>

Michigan State University Extension programs and materials are open to all without regard to race, color, national origin, gender, gender identity, religion, age, height, weight, disability, political beliefs, sexual orientation, marital status, family status or veteran status. Issued in furtherance of MSU Extension work, acts of May 8 and June 30, 1914, in cooperation with the U.S. Department of Agriculture. Quentin Tyler, Director, MSU Extension, East Lansing, MI 48824. This information is for educational purposes only. Reference to commercial products or trade names does not imply endorsement by MSU Extension or bias against those not mentioned.



Washtenaw Farm Council Grounds Parking & Maps

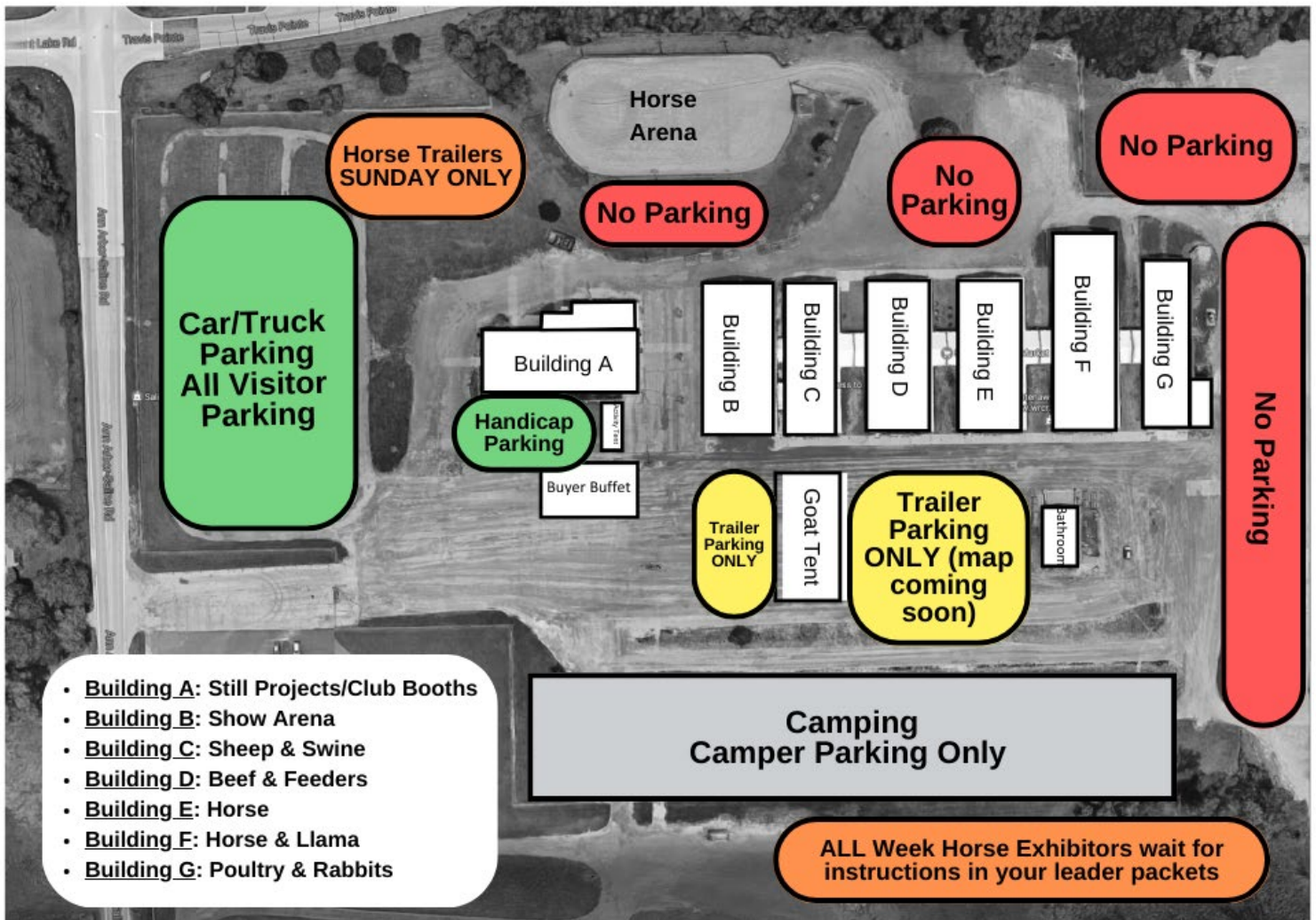
Washtenaw Farm Council Grounds Parking

The Washtenaw Farm Council Staff need your help to keep everyone safe at the Washtenaw Farm Council Grounds by parking in the correct areas on the grounds. **If you park in the wrong area, we will ask you move your vehicle!** A map for livestock trailer parking will be emailed out later this week. Please communicate this information with family members or friends coming to visit during the 4-H Youth Show.

Copies of these maps will be available at the 4-H Office in Building A during set up and during the week of the Youth Show.

Also, the Farm Bureau Office Parking is NOT for 4-H Youth Show attendees or visitors.

Washtenaw County 4-H Youth Show Parking Map





Barn & Building Set Up & Clean Up

4-H Youth Show Barn and Building Set Up Starts Thursday July 17th



Set up Starts on **Thursday July 17th** with the following areas:

- 5-9 pm Buildings A-D and Tents
 - We will need help in Building A to set up club booth tables
- 6-9 pm Horse & Pony Barn Set-Up & Meeting on the Hill
- 6- 9 pm Rabbit & Poultry Barn G Set-Up

The Washtenaw Farm Council Grounds are closed on Friday for disinfecting and no 4-H volunteers, families, or exhibitors should be on site!

Saturday July 19th Set up runs from 9 am – 2 pm for all Buildings and Barns. During this time, Still Project Entry Tags will be available in Building A. We will also need help setting up tables for Still Project Judging on Saturday at 11 am and again on Sunday at 4:30 pm to take down the tables.

Clubs can also set up Club Booths and Still Project Entry Tags on **Sunday July 20th** starting at 9 am.

It takes many hands to set up for this event and we expect clubs and 4-H members to do their part to get ready for the Washtenaw County 4-H Youth Show!

Washtenaw County 4-H Youth Show Clean Up: Saturday July 26th

We will begin clean up on Saturday, July 26th at 8 am. Clubs and independent participants are required to have parents and members at the Farm Council Grounds to help clean up. **All unloading and loading needs to happen from the South Side of the barns.** Families and clubs cannot remove any Still Project Exhibits or Booths until 8 am on Saturday morning! From 8 am – 1 pm 4-H clubs and members should be cleaning Buildings A-G. All clubs are asked to help clean up the general show grounds after barns and buildings are clean. Many hands make light work so make sure to do your part to leave it better than you found it!



Clubs and individuals are responsible for cleaning areas in which you exhibited. If you exhibited in more than one area, check with your club leader or superintendent about which area to assist with clean up. Once you finish one area, make sure to check that all the other areas are clean too.

Shavings Available at Chelsea Lumber Bridgewater

Animal Exhibitors: The last day to order shavings from Chelsea Lumber Bridgewater is July 17th by 3 pm. The price is \$6 a piece. You will need to tell them what 4-H Club you are with so they can place them correctly. When you call, please ask for Alissa Robison.



Thanking Sponsors & Buyers

“I would be more appreciative of a handwritten heartfelt thank you letter and maybe include a picture of the youth and their project animal” -4-H Buyer

The Washtenaw County 4-H Youth Show depends on the many sponsors and buyers who make this event possible. We want to make sure all of these sponsors and buyers continue to receive recognition and keep coming back to help sponsor and buy at the 4-H Youth Show Auction!

If you receive an award or sell an animal at the auction, you should send a thank you card or bring a thank you card to the individual after the auction.

How do you write a good thank you note? Check out these tips below from MSU Extension Educator Laurie Rivetto.



A good thank-you note includes:

- A greeting with the buyer's or sponsor's name or company.
- An acknowledgement of the specific reason for the thanks (i.e., the purchase of your animal project or sponsoring the award).
- The reason why you appreciate the buyer/sponsor. For instance, they supported you and your 4-H project, have been generous to 4-H, or took time to benefit youth.
- How you plan to use the money from the sale or premium.
- A comment or details about yourself or an update on your life. For example, you can explain why you enjoy 4-H or something you learned in your project work. A photo would also be great to include from the auction.
- A repeat of your thank you.
- A closing and your signature (e.g., With thanks, name or Sincerely, name).



It is best to hand-write your thank you note. Make sure it's neat and legible and on a thank-you note card. We recommend blue or black ink. It is always great to invite the buyer to attend the auction again in the future and [thank all of your bidders](#).

Want some ideas on what to write? Check out the [MSU Extension Resource Writing a Thank-You Note: 4-H Livestock Auction Buyers](#) with examples and more tips.



Still Projects Judging

How Does Still Project Judging Work?



Still Projects Judging takes place on Sunday, July 20th from 1- 4 pm. Here are some tips for judging!

- Entry tags for each still project exhibit will be available in Building A starting on Saturday July 19th. Be sure the exhibit tag for each exhibit is attached to the project. This tag must remain with the exhibits.
- The judge will discuss the project with the exhibitor then rate the project, and the clerk will mark either A, B, or C directly on exhibit tag and the member will receive their ribbon from the clerk. Cloverbud exhibitors (5-7 years old by Jan 1 of this year) receive the Cloverbud Ribbons (Green) along with helpful comments from the judge.

- Projects should be moved to your club exhibit in the exhibit building after they have been judged. (In case of inclement weather, come prepared with umbrellas, plastic bags, etc. to move projects safely from the pavilion to the exhibit building.)
- Honors/Best of Show: Judges may choose to hold possible honors projects and best of show will be selected after all preliminary judging has been completed. Special awards (honors and best of show) will be announced at the awards program on Wednesday of the 4-H Youth Show beginning at 4:00 PM in the big tent just south of Building A.
- Judges will have project evaluation forms available at their tables, and youth members may request them at the time of judging. Encourage your members to use these forms as a reference to keep track of what they did well and what they can improve for next time.
- **Judging only runs from 1-4 pm Sunday so make sure all of your exhibits have been judged by the judging end time!**
- Non-Animal Club Educational Exhibits should be displayed at your club booth and animal Club Educational Exhibits should be displayed in the barn with a Club Educational Exhibit Label available at the 4-H Office in Building A.
- A few items like trash cans, club educational exhibits, demonstrations, and public speaking are judged at a different time and may be announced later in the week.
- **EXHIBITS WILL NOT BE RELEASED UNTIL SATURDAY MORNING.** Exhibits must remain on display until Saturday, July 26 at 8:00 a.m. Please be sure that they are NOT removed before that time. Anyone removing their exhibit prior to this time may be subject to forfeiture of their premiums.
- Club booths are to be disassembled, Saturday, July 26 from 8 to 10 a.m. Be sure all materials are removed and the floor swept (this includes peg board and tables). Tables must be placed on pallets, so adult and teen assistance is helpful!



Still Projects Information

Entrepreneurship Exhibits and Silent Auction Bidding

4-H Exhibitors exhibiting Entrepreneurship items will sign up for 2 time slots on Sunday at the Entrepreneurship table near the entrance of Building A. These projects will be open for bids between Monday and Thursday evening. Bidders will be notified if they are the final bidder by noon on Friday.

Payment must be provided before bidders can pick up their items. We will also be posting the items on our Facebook page throughout the week to help the youth with advertising.

This is a great opportunity for visitors and family members to check out these items and maybe take one home! Last year we had a variety of projects displayed and we look forward to seeing the options this year.



Join the Style Revue on Tuesday from 3-4 pm in Building A



We are excited to announce that the Still Projects Committee will be hosting a Style Revue on **Tuesday, July 22nd at 3 pm in Building A after Public Speaking and Demonstrations** at the Washtenaw County 4-H Youth Show.

What is a Style Revue? The 4-H Style Revue is a fun opportunity where members model their constructed projects from the 4-H Youth Show on the runway!

Youth who enter must also complete a narrative card that explains what they made, how they made it, and whatever else they would like to share about the project.

We will be giving these narrative cards out at judging on Sunday, July 20th. Youth will have until Friday to fill these out and then give them to our Still Projects Superintendent Pam Sarlitto to read aloud during the event. Anyone with a wearable exhibit is welcome to participate. Sign up with the link below or just let us know during Judging!

Sign up: <https://forms.gle/b3kgdSaTJeqogcG99>

All visitors are welcome to come cheer on our 4-H'ers during the event!



Animal Haul-In Information

Animal Check In Procedure and Maps



Animals cannot enter the barns until they have been checked in by a veterinarian at the #6 gate or outside the barn for Poultry/Rabbits **AND** checked in with the superintendent. **This also includes breeding stock.** Trailers must stop at the #6 gate and enter through the South Entrance (see the map below). The vet check will be at gate #6. Follow the instructions for each species to make sure to unload in the correct area. After unloading, trailers can be parked in the trailer parking (map coming soon). If you are hauling in your small animals in a car or truck, you should use the front entrance and park in car/truck and visitor parking after unloading.

- [Livestock & Dairy Haul In Instructions & Maps \(Cattle, Sheep, Swine\)](#)
- [Small Animal Haul In Instructions & Maps \(Goats, Llamas, Poultry, Rabbits\)](#)
- [Horse & Pony Exhibitor Dashboard](#)

Animal Haul In Schedule

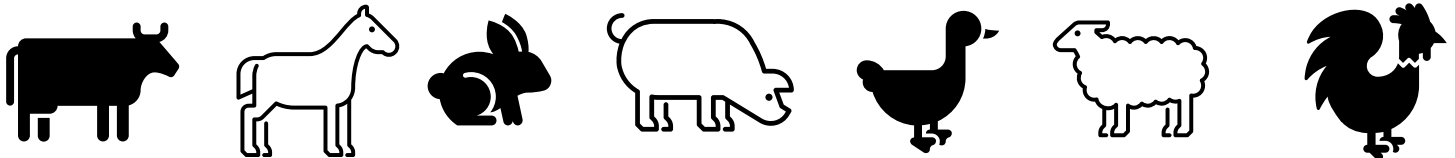
The schedule for Animal Haul-In for the 4-H Youth Show is:

Sunday July 20:

- 8 am: Horse & Pony Protégé Walk Trot Exhibitors ONLY Enter
- 9 am: All Other Horse & Pony Exhibitors
- 10 am – 12 pm: Enter All Camelids
- 5 – 8 pm: Enter All Cattle (Beef/Feeder/Dairy)

Monday July 21:

- 1-4 pm: Enter All Sheep
- **1-5 pm: Enter All Goats (changed)**
- 4-7 pm: Enter All Swine
- 4-5:30 pm: Enter All Poultry
- 5:30 – 7 pm: Enter All Rabbits





Animal & Horse Exhibitor Information

Animal Exhibitor Requirements and Animal Health Emergency Plan

Washtenaw County 4-H has an Animal Health Emergency Plan for the Washtenaw County 4-H Youth Show. This plan is shared with club leaders and superintendents, but we also recommend 4-H families take a look at this document. You can find it on our website [here](#).

We also recommend reading up on the MDARD exhibition requirements for any species your family is showing in the Washtenaw County 4-H Youth Show. You can find these on their [website](#).



Washtenaw County 4-H Youth Show Horse & Pony Exhibitor Dashboard



One of our amazing 4-H Horse Leaders has created a dashboard with all the links needed for 4-H Horse and Pony exhibitors. This dashboard contains links to our sign-up genius, club leader and exhibitor informational packet, patterns, dressage test times, volunteer duties, barn layout/assignments, etc. and that it will get updated throughout the month.

We encourage everyone to bookmark this link! [Horse Dashboard Link](#)

Livestock & Dairy Barns: Limited Tack Stalls & Tight Space

There are a large number of livestock and dairy at the 4-H Youth Show this year. We are excited our numbers are up, but this means less space! Clubs and families should be prepared to house their tack elsewhere if needed.

With the numbers up, space in the barn will also be very tight. We will not be able to space out animals like we have in the past. Please plan accordingly.





Auction Information

4-H Livestock Auction & Buyers Buffet



Please remind your potential buyers that the Buyers Buffet will be open to Buyers only from 5-6 pm and the 4-H Auction begins at 6:30 pm in Building B. This year's Buyer Buffet will include food from Bone Heads Barbeque. The Buyers Buffet will open to everyone from 6-7 pm.

You can also help publicize the auction by sharing our Facebook posts and events about the auction on other social media sites!

Market Livestock Exhibitors Buyers Buffett Sign Up

As many of you know, the Buyer's Buffet is a big part of our livestock auction, and we'll be hosting more than 550+ buyers. We need your help to make it amazing, so let's roll up our sleeves, show off our fantastic 4-H spirit, and make this year's Buyer's Buffet the best one yet!

We are asking for everyone's assistance in the following items:

- Volunteers to help set up and work in the Buyer's Buffet tent
 - Here's is a link to the the sign-up sheet - [Buyer's Buffet Help](#)
 - Note - Buyers like to see the 4-H'ers they are supporting helping serve the meal. With that in mind, we are looking for 4-H'ers to help in addition to their family members.
- Food Donations needed for dinner
 - Here's is the list of items we're looking for - [Buyer's Buffet Food Sign Up Info](#)
 - Note - each market livestock family must contribute to the items contained within the attached list. If you are exhibiting in more than one market species, please donate the respective item for each species.

As our 4-Hers start to contact their buyers to invite them to the auction, we have prepared a letter to be passed out which gives additional details for the auction. The letter is linked here and attached to this communication.

If anyone has questions or needs further guidance, please do not hesitate to reach out to someone on the Buyer's Buffet Committee - Valisa Bristle, Nicole Feldkamp, Denise Prelipp, or Natalie Rentschler.





Food at the 4-H Youth Show

4-H Kitchen at the 4-H Youth Show: Open Monday-Thursday 11 am – 7 pm



We are thankful that two 4-H volunteers have stepped up this year to run the 4-H Kitchen! Now we need your help supporting them in running the 4-H Kitchen.

We have volunteer slots for youth and adults to volunteer in the 4-H Kitchen and for adults willing to be runners to the store to buy more supplies or food.

We especially need help on Thursday! Horse and still project participants are encouraged to help when the 4-H Auction is happening Thursday evening.

Clubs are expected to provide volunteers for the 4-H Kitchen!! If you have a youth in your club who is younger than 12 but mature enough to help, please contact us! Parents who need to bring younger children to be able to volunteer are welcome.

Shoppers/Runners must be adults with transportation. These volunteers will be going to the store to buy any items needed for the 4-H Kitchen. 4-H Youth should NOT be traveling on these trips unless with a parent.

Adults must be Silver Level MSU Extension Volunteers which requires them to [fill out an application and consent to a background check](#). The 4-H Office is happy to help with that process if volunteers have questions, 734-997-1678.

Sign Up Here: <https://www.signupgenius.com/go/10C0D45A5AF2AA3F8C16-43028702-4hkitchen#/>

Saline Area Lions Ice Cream Truck is Back at the 4-H Youth Show!

We are thankful to once again have the Saline Lions Ice Cream Truck at the Washtenaw County 4-H Youth Show. The Saline Area Lions is a non-profit organization based in Saline, Michigan that provides free vision screenings along with scholarships and funds to help with community projects. Made up of a diverse group of men and women, one of the ways they raise funds is through their ice cream truck.



Last year, the Saline Lions sold ice cream and also donated back \$1,000 of the profits earned to support our Washtenaw County 4-H senior scholarships. We encourage families to purchase ice cream and to thank this group of volunteers for supporting the Washtenaw County 4-H program.



Volunteers Needed!

Washtenaw County 4-H Still Project Clerks and Runners

We need more clerks and runners to assist in Still Project Judging on Sunday! Every club with member(s) participating in Still Projects of any type (Dept 60 and higher) is **required** to provide at least one full shift clerk or runner or at least two half shift clerks or runners to assist with judging.

Clerks and runners are needed Sunday, July 20th, 12:30 PM-4:30 PM in Building B (Open Pavilion). Clerk Orientation **MUST** be completed prior

to this time either in person at the Youth Show or with our Still Project Superintendents before hand. Clerks and runners can be **anyone** who meets the age requirements— 4-H members ages 12+ for clerks, parents, leaders, alumni, grandparents, friends, etc.

Clerks and Runners can sign up here: https://msu.co1.qualtrics.com/jfe/form/SV_b042iNauPZIs4uO or please email (speyerje@msu.edu) or call, 734-436-1362, Jenny Speyer as soon as possible.



Herdsmanship Judges Needed!



We are looking for volunteers for herdsmanship judging on Tuesday-Friday of the 4-H Youth Show. Herdsmanship judges should be 18+ years old and we encourage parents/club leaders to NOT sign up for the species their child or club shows in. We know this can be challenging for bigger clubs, so please do your best.

Judges will be evaluating each club's area for the species using a judging form. You don't need to be an expert, just basic animal knowledge!

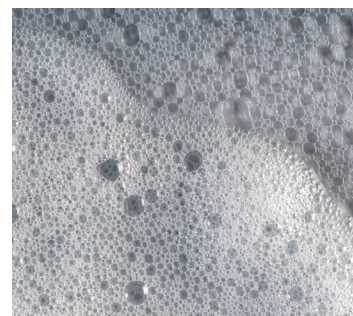
Sign Up Here: <https://www.signupgenius.com/go/10C0549ABA82FA2FCCE9-57463500-2025#/>

Club Volunteer Requirements: Wash Rack Duty and Horse Volunteer Hours

Each club or independent exhibitor with beef, feeders, dairy, sheep, swine, and goats are expected to fulfill their wash rack duty scheduled hours during the week of 4-H Youth Show. Horse club and independent exhibitors are also responsible for fulfilling their required volunteer hours.

It takes many people to keep the Washtenaw County 4-H Youth Show running smoothly and we need all our clubs and exhibitors to help make this a great experience for all who attend!

Check out the [Wash Rack Duty Schedule](#)





Recognition & Fun Events

Wednesday Still Projects Awards and Cloverbud Trophies



Wednesday at 4 pm we will be holding the Still Project Awards Program under the large tent in front of Building A. During this time, we will give out Best of Show awards for Still Projects. Following these awards, we will present Cloverbud Trophy awards to our youngest animal exhibitors. If you have a cloverbud exhibitor, they are invited to attend and receive their trophy.

How do you know if you are eligible for Best of Show? Youth receiving Best of Show will be given a blue card invitation on their project.

Graduating Seniors Recognition at Friday Night Awards

Friday Night Awards recognizes our memorial awards, herdsmanship winners, sweepstakes showmanship winners, and also our graduating seniors. If you have a youth who has recently graduated, please stop by the 4-H Office during the week and complete a senior recognition card. Seniors will be asked to come up during the Friday Night Awards and be recognized.



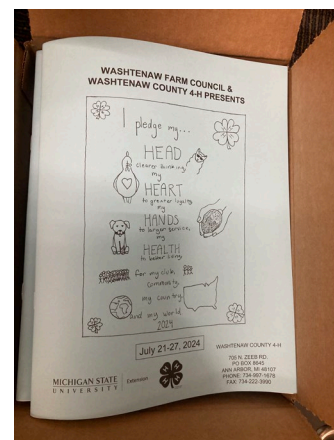
Washtenaw County 4-H Youth Show Goosechase



This year we will be launching a Washtenaw County 4-H Youth Show Goosechase for 4-H members to participate. There will be prizes for the top 3 winners! Keep an eye out for the Goosechase code which we will release on Sunday July 20th.

Vote for the 2026 Washtenaw County 4-H Youth Show Book Cover Contest

On Monday July 21st, we will be posting the entries for the 2026 Washtenaw County 4-H Youth Show Book Cover Contest in Building A near the 4-H Office. These will be open for voting between Monday-Friday of the Youth Show. Any 4-H member can vote once for their favorite entry. This voting is NOT open to parents, adults, or non 4-H members. 4-H values youth voice and we want the youth in our program to choose the next cover and back cover of the 4-H Youth Show Book! Please make sure to stop by a vote for your favorite! In 2026, the younger age bracket will be on the cover and older ages will be on the back.





Camping Information From WFCG

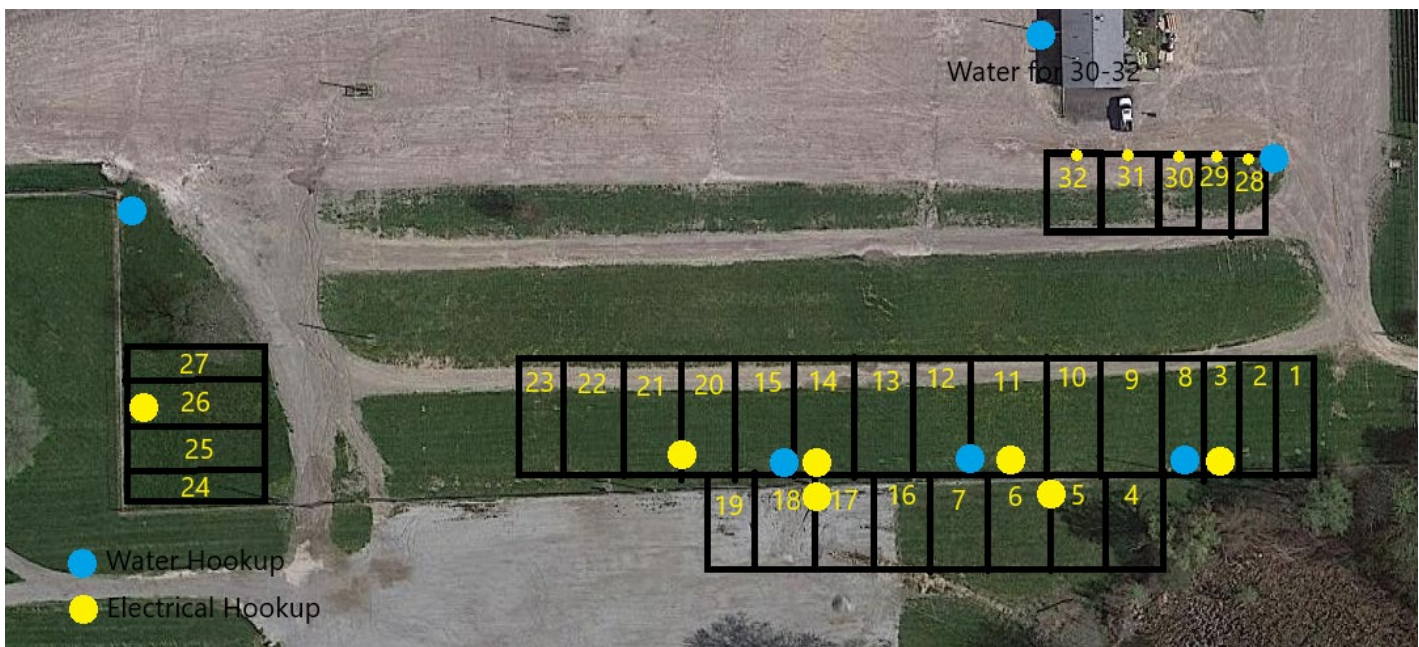
Camping Rules from Washtenaw Farm Council Grounds Staff

Reminder: The Washtenaw Farm Council Grounds Staff coordinates camping and all questions about camping should be sent to them.

- Please only run your essentials when you are not in your camper, this will help minimize outages
- Bringing a two-way hose adapter is recommended
- Campers 20-22, 24-27, and 30-32 please bring at least a 100 ft hose to get water, we only have a certain amount of water hookups and we are trying to make sure everyone has water
- Clean up all trash before leaving for the week
- If you have not paid for camping, please bring your form of payment to the ground's office or leave in drop box outside of the office with your full name attached
- If you have any issues or questions with your campsite, please contact WFC staff **only** 734-217-9835
- No pets(unless it is for your fair projects) are allowed during the fair
- All campers must camp on their assigned spot
- Please make sure you are using only your assigned electrical outlet, all electrical boxes will be labeled with your assigned camping number
- If you need an extra parking spot the grass berm north of the campsites is available
- Parents must stay overnight with youth
- No golf carts, side by sides, or utility vehicles

Camping Map

See the names and campsites on the next page for your location on the map.





Camping Information From WFCG

Camping Sites:

Color	Section Color	Gate No.		Electric Hookup	Site No.	Name
		Main Gate		30 amp	1	Jen Ashman
		Main Gate		30 amp	2	Olivia Duussel
		Main Gate		30 amp	3	Angela Oakman
		Main Gate		30 amp	4	Jeff Lorch
		Main Gate		30 amp	5	Omar Mouhaier
				30 amp	6	Cristin Harsh
				30 amp	7	Connie Maynard
		3		30 amp	8	Kathryn Heal
		3		30 amp	9	Cheri Harteg
		3		30 amp	10	Kim Denoyer
		3		30 amp	11	Julie Desborough
				50 amp	12	Joanna Jamil
		Main Gate		30 amp	13	Russell Berenson
		Main Gate		30 amp	14	Aaron Rogers
		Main Gate		30 amp	15	Natalie Rentschler
				30 amp	16	Caro Short
				30 amp	17	Juli Burger
				30 amp	18	Angela Eddins
		Main Gate		30 amp	19	Erin Perez
		3		50 amp	20	Melissa Henes
		3		30 amp	21	Tammy Broesamle
		3		30 amp	22	Carrie Trinkle
				30 amp	23	Ed Monahan
		3		30 amp	24	Sam Buss
		3		30 amp	25	Megan Skeans
		3		30 amp	26	Regina Kruger
		3		30 amp	27	Jeff Weidmeyer
		Main Gate		50 amp	28	Megan McInnon
		Main Gate		50 amp	29	Cala Hale
		Main Gate		50 amp	30	Mandy Rogers
		Main Gate		50 amp	31	Angela majeski
		Main Gate		50 amp	32	Laura Lesowyk



4-H Youth Show Schedule

THURSDAY, JULY 17

5 PM – 9 PM	Barn Set-Up Begins-Building A-D and Tent
6 PM – 9 PM	Horse & Pony Barn Set-Up & Exhibitor Meeting ~ Buildings E-F
6 PM – 9 PM	Rabbit & Poultry Barn Set-Up ~ Building G

FRIDAY, JULY 18

All Day	Farm Council Grounds Closed for Disinfecting
---------	--

SATURDAY, JULY 19

9 AM-2 PM	Decoration for all Buildings A-G
-----------	----------------------------------

SUNDAY, JULY 20

9 AM-5 PM	Building A open to Set-Up Club Booth
8 AM	Horse & Pony Protégé & Walk/Trot exhibitors ONLY may begin to haul-in horses
9 AM-4 PM	Horse & Pony all others haul-in horses
10 AM	Horse & Pony Protégé (Check-In 9:30 AM) ~ Ring 1
10 AM-12 PM	Enter All Camelids (Llama, Alpaca, etc.)
12 PM	Horse & Pony PEP, Lead Line & Walk Trot ~ Ring 1
1 PM-4 PM	Still Project Judging ~ Building B
5 PM-8 PM	Enter All Cattle (Beef/Feeder/Dairy)
8 PM	Livestock Arena Set-Up – Barn B

MONDAY, JULY 21

9 AM	Horse & Pony Starting with Dressage followed by Fitting and Showing
9 AM – 1 PM	Dog Show
1 PM – 4 PM	Enter All Sheep
3 PM	Cat Show – Building A
1 PM – 5 PM	Enter All Goats
4 PM – 7 PM	Enter All Swine
4 – 5:30 PM	Enter All Poultry
5:30 PM – 7 PM	Enter All Rabbits
6 PM ~	Horse & Pony Color Guard, Senior Rides, Ray Girbach Award, Fitting & Showing Championships ~ Following min. 1 hour break after classes, starting no earlier than 6 PM
6 PM	Still Exhibit Booth Judging

TUESDAY, JULY 22

Time TBD	Entrepreneurship Silent Auction Begins
8 AM	Horse & Pony Over Fences ~ Ring 1
8 AM	Horse & Pony Intro & Training Dressage Tests (exhibitors not competing over fences) ~ Ring 2
9 AM	Llama Showmanship & Trail Classes ~ Building B
9 AM	Poultry Showmanship, Market and Breeding Classes, Skill-A-Thon ~ Building G
1 PM	Demonstrations, Public Speaking, Extemporaneous Judging ~ Large Tent
1 PM	Beef and Dairy Feeder Calf Classes followed by, Beef Breeding, Showmanship & Market Classes ~ Building B
3 PM	Style Revue ~Building A
6 PM ~	Horse & Pony Color Guard, Senior Rides, Dressage Equitation, then Versatility ~ Following minimum one hour break after classes, starting no earlier than 6:00 PM



4-H Youth Show Schedule

WEDNESDAY, JULY 23

8 AM	Swine Showmanship, followed by Market ~ Building B
8 AM	Horse & Pony Saddle Seat & Western Performance Classes ~ Ring 1
9 AM	Horse & Pony Trail Classes ~ Ring 2
9 AM	Market Rabbits followed by Showmanship & Breeding ~ Building G
2 PM	Goat Skill-A-Thon
2 PM	Llama Leaping Contest ~ Barn F
4 PM	Still Projects Awards Program ~ Large Tent
5 PM	Sheep Showmanship followed by Breeding & Market Classes ~ Building B
6 PM ~	Horse & Pony Color Guard, Senior Rides, Saddle Seat & Western Performance Championships, then Team Versatility ~ Following minimum one hour break after classes, starting no earlier than 6:00 PM

THURSDAY, JULY 24

8 AM	Horse & Pony Hunt Seat Performance Classes ~ Ring 1
8:30 AM	Market Goat followed by Showmanship & Breed Classes ~ Building B
9 AM – 12 PM	Make and Take Crafts ~ Large Tent
9:30 AM	Dairy Showmanship Senior, Intermediate, Junior, then Dairy Show ~ Building B
10 AM	Horse & Pony English/Western Riding Pattern ~ Ring 2
2 PM	Sweepstakes Showmanship Exhibitor Meeting ~ Building B
2:30 PM	Sale ring set up ~ Building B
5 PM	Auction Buyers Buffet
6 PM ~	Horse & Pony Color Guard, Senior Rides, Hunt Seat Performance Championships, then Versatility ~ Following minimum one hour break after classes, starting no earlier than 6:00 PM
6:30 PM	Livestock and Small Animal Auction ~ Building B
7 PM	Entrepreneurship Silent Auction Closes

FRIDAY, JULY 25

8 AM	Horse & Pony Gymkhana & Costume Contest ~ Ring 1
9 AM	Rabbit Skill-A-Thon ~ Building G
9:30 AM	Goat Trail Class ~ Building B
9:30 AM	Livestock Judging Contest ~ Building B
10:30 AM	Poultry Agility Contest ~ Building G
11 AM	Dairy Judging Contest ~ Building B
11:30 AM	Rabbit Agility Contest ~ Building G
1 PM	Archery Contest ~ South Field
1:30 PM	Animal Decorator Contest ~ Building B
2:30 PM	Ag Olympics ~ Building B
4 PM	Style Revue ~ Large Tent or Building A
TBD	Horse & Pony Clubs Grand Entry ~ Ring 1, or Building B, will be announced
5 PM	Washtenaw 4-H Alumni Fun Show ~ (4-H Alumni and Jr. Livestock Parents)
6 PM	Sweepstakes Showmanship & Senior Recognition ~ Building B
8 PM	Release of buyer's take home animals
9 PM	RELEASE OF BREEDING ANIMALS, NON-AUCTION ANIMALS & HORSES or AFTER GATE CLEANING, WHICHEVER LATER.

SATURDAY, JULY 26

6 AM	Release of Auction Animals
8 AM-9 AM	Release of Still Projects ~ Building A
8 AM-10 AM	Clean-up ~ Building A
8 AM-1 PM	Clean-up All Barns
4 PM – 6 PM	Pick up for Market Poultry/Rabbits in Building A